

- Aluminum Extrusions
- Cargo Safety
- Concrete
- Electrical
- Hose Clamps
- OEM
- Post Tension
- Shoring
- **Trailer Parts**
- Wire Mesh



ALL INDUSTRIAL PRODUCT  
SOLUTIONS

# TRAILER PARTS CATALOG

2024

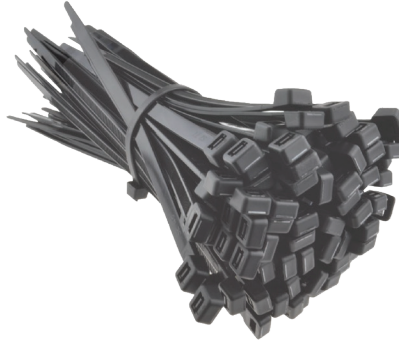


Scan Code to  
Visit Our Website



# TRAILER PARTS

## CABLE TIES - BLACK



Part Number	Description	Bag Quantity
CT0108	M4-18-0M Miniature Cable Tie	1000/ Bag
CT0111	M6-18-0C Miniature Cable Tie	100/ Bag
CT0137	S7.5-50-0C Standard Cable Tie	100/ Bag
CT0138	S7.5-50-0M Standard Cable Tie	1000/ Bag
CT0124	S14-50-0M Standard Cable Tie	1000/ Bag
CT0087	I55-40-0C Intermediate Cable Tie	100/ Bag
CT0088	I55-40-0M Intermediate Cable Tie	1000/ Bag
CT0095	LHD11-120-0C Light Heavy Duty	100/ Bag
CT0099	LHD18-120-0C Light Heavy Duty	100/ Bag
CT0161	HD21-175-0L 21 175 Black Heavy	100/ Bag
CT0169	HD48-175-0L Heavy Duty Cable Tie	100/ Bag

# TRAILER PARTS

## CABLE TIES - NATURAL



Part Number	Description	Bag Quantity
CT0109	M4-18-9C Miniature Cable Tie	100/ Bag
CT0110	M4-18-9M Miniature Cable Tie	1000/ Bag
CT0113	M6-18-9C Miniature Cable Tie	100/ Bag
CT0114	M6-18-9M Miniature Cable Tie	1000/ Bag
CT0089	I55-40-9C Intermediate Cable Tie	100/ Bag
CT0090	I55-40-9M Intermediate Cable Tie	1000/ Bag
CT0085	I14-40-9C Intermediate Cable Tie	100/ Bag
CT0086	I14-40-9M Intermediate Cable Tie	1000/ Bag
CT0139	S7.5-50-9C Standard Cable Tie	100/ Bag
CT0125	S14-50-9C Standard Cable Tie	100/ Bag
CT0126	S14-50-9 M Standard Cable Tie	1000/ Bag
CT0128	S17-50-9C Standard Cable Tie	100/ Bag
CT0098	LHD14-120-9C Light Heavy Duty	100/ Bag
CT0100	LHD18-120-9C Light Heavy Duty	100/ Bag
CT0160	HD17-175-9C 17 175 Natural Heavy	100/ Bag
CT0170	HD48-175-9L Heavy Duty Cable Tie	100/ Bag

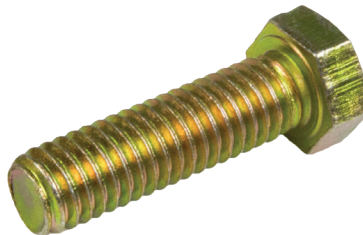
# TRAILER PARTS

## HEX HEAD NUT



Part Number	Description	Bag Quantity
MT0005	1/2-13 Nylon Stop Zinc Yellow Head Hex Nut	11200/ Box
MT0006	3/8-16 Nylon Stop Zinc Yellow Head Hex Nut	3000/ Box

## HEX HEAD BOLT



Part Number	Description	Bag Quantity
MT0001	3/8-16 x 1-1/4" MB Gr5 Zinc Head Hex Bolt	1000/ Box
MT0002	1/2-13 x 3-1/4" MB Gr5 Zinc Head Hex Bolt	250/ Box
MT0003	1/2-13 x 4-1/2" MB Gr5 Zinc Head Hex Bolt	180/ Box
MT0004	1/2-13 x 5-1/2" MB Gr5 Zinc Head Hex Bolt	150/ Box

# TRAILER PARTS

## U-BOLTS YELLOW ZINC



Part Number	Description	Bag Quantity
MT0007	3/8 x 3 1/8 x 4 U-Bolt Yellow Zinc	200/ Box
MT0008	1/2 x 3 1/8 x 4 1/2 U-Bolt Yellow Zinc	100/ Box
MT0009	1/2 x 3 1/8 x 5 1/2 U-Bolt Yellow Zinc	85/ Box
MT0010	3/8 x 2 1/8 x 4 U-Bolt Yellow Zinc	220/ Box
MT0011	3/8 x 2 1/8 x 4 1/2 U-Bolt Yellow Zinc	200/ Box
MT0012	3/8 x 2 1/8 x 5 1/2 U-Bolt Yellow Zinc	170/ Box
MT0013	3/8 x 3 1/8 x 2 1/2 U-Bolt Yellow Zinc	270/ Box
MT0014	3/8 x 3 x 2(L) x 1 1/2 U-Bolt Yellow Zinc	300/ Box
MT0024	3/8" Mini U-Bolt Yellow Zinc	300/ Box
MT0025	3/8 x 3 1/8 x 4 1/4 U-Bolt Yellow Zinc	160/ Box
MT0026	1/2 X 2 1/8 X 4 1/2" U-Bolt Yellow Zinc	110/ Box
MT0027	1/2 X 2 1/8 X 5 1/2" U-Bolt Yellow Zinc	95/ Box

## U-BOLTS SS304



Part Number	Description	Bag Quantity
MT0034	1/2" x 3 1/8 x 4 1/2" U-Bolt SS304	5000/ Pallet
MT0048	1/2" x 3 1/8 x 5 1/2" U-Bolt SS304	50/ Box

# TRAILER PARTS

## EQUILIZER BAR

*Black Paint Finish*



*Galvanized Finish*



A

B

C

D

7 3/4"

2 7/8"

9/16"

9/16"

### Features

7-3/4" Long curved equalizer connects double-eye springs on tandem or triple axle trailers, and allows for enough movement between the axles to keep the ride smooth and the load secured. Center bolt hole is 9/16" in diameter and comes with Nylon Bushing.

- 7-3/4" from center to center of bottom holes
- 2-7/8" from center to center of either bottom hole to the top hole
- Comes with Galvanized and Black Paint finish
- Connects double-eye springs on dual or triple axle trailers
- Springs attach to each of the equalizer with shackle straps (sold separately)
- Equalizer is suspended from center hanger (sold separately)
- Helps to distribute the weight of the trailer evenly to the front and rear springs
- Provides smoother riding trailer
- Fits 1-3/4" wide, double-eye leaf springs with 9/16" spring eyes
- Center and spring eye holes are all 9/16"



# TRAILER PARTS

## HUBS



Part Number	Description	Bag Quantity
MT0019	3500 lbs. 1-3/8" X 1/16" 5 C.I. Bolts AT 4.5" BC Complete in HDG 5-6 Size Hub	392/ Pallet
MT0020	2500 lbs. Black Idler Hub 4.5" w/ 5 Bolts	680/ Pallet
MT0021	2500 lbs. Galvanized Idler Hub 4.5" w/ 5 Bolts	680/ Pallet

## ALUMINUM L-BUNK BRACKET



Part Number	Description	Bag Quantity
MT0037	5-3/4" L - Shaped Bunk Bracket	500/ Pallet
MT0038	8" L - Shaped Bunk Bracket	500/ Pallet

## SAFTY CABLES



Part Number	Description	Bag Quantity
MT0039	36" PVC Coated Safety Cable 5K	EA
MT0040	54" PVC Coated Safety Cable 5K	EA

## KEEL ROLLER



Part Number	Description	Bag Quantity
MT0036	8" Black Keel Roller	600/ Pallet

# TRAILER PARTS

## HEX HEAD BOLT GALVANIZED



Part Number	Description	Bag Quantity
TS0023	860102 1/2" X 3- 1/2" Hex Head Bolt	250/ Box

## LUG BOLT GALVANIZED



Part Number	Description	Bag Quantity
MT0032	3/8" x 1-1/2" Galvanized Lug Bolt A307	1000/ Box

## BRASS FITTING



Part Number	Description	Bag Quantity
MT0041	Brake Line Male Fitting Brass	1000/ Box

## FLANGE NUT



Part Number	Description	Bag Quantity
MT0028	1/2" Flange Nut SS304	100/ Box



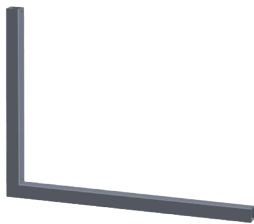
# TRAILER PARTS

## U-BOLTS GALVANIZED



Part Number	Description	Bag Quantity
TSS006	983100 Gal Winch Stand U-Bolt 2-1/2"x3-1/2"x3/8"	392/ Pallet
TSS007	977100 Gal Flat Bar Drive U-Bolt 3-3/8"x2-1/4"x3/8"	680/ Pallet
TSS008	979100 Gal .4" Slide Axle U-Bolt 2-1/2"x5-1/4"x7/16"	680/ Pallet
TSS009	978100 Gal 3"Channel Bunk Bracket U-Bolt 3"x3"x7 1/6"	392/ Pallet
TSS010	994100 Gal Winch Stand U-Bolt 3"x4"x7/16"	680/ Pallet
TSS013	101010 Gal ABDO U-Bolt 3"x6-3/4"x1/2"	680/ Pallet

## BEND UPRIGHT



Part Number	Description	Bag Quantity
TSS003	488200 1-1/2"x16"x26 Square 100° Bend Upright	184/ Pallet
TSS004	488202 1-1/2"x17-1/2"x26-1/2" Square 90° Bend Upright	184/ Pallet
TSS005	488203 1-1/2"x20x26-1/4" Square 100° Bend Upright	172/ Pallet

## HOLE PLATES



Part Number	Description	Bag Quantity
TS0015	164101 2 Hole Plate 2-1/2"	140/ Box
TS0016	164102 2 Hole Plate 3"	130/ Box
TS0017	164103 2 Hole Plate 3-1/2"	110/ Box
TS0018	164107 2 Hole Plate 3-3/4"	110/ Box

## TONGUE



Part Number	Description	Bag Quantity
TSS001	403100 3"X3" X21" Tall for 3" Wide Tongue	70/ Pallet

# TRAILER PARTS

## A-FRAME JACK



Part Number	Description	Bag Quantity
2000-B	A-Frame Jack w/ Topwind 2,000 lbs.	NA
5000-B	A-Frame Jack w/ Topwind 5,000 lbs.	NA
2000S	A-Frame Jack w/ Sidewind 2,000 lbs.	NA

## COUPLER



Part Number	Description	Bag Quantity
5296-B	2-5/16" Low Profile Hatch 12,500 lbs.	NA
80PL	2-5/16" HD Cast Head Bolt on Coupler 20,000 lbs.	NA

## ELECTRIC BRAKE



Part Number	Description	Bag Quantity
MT0022L	12" Electric Brake Left	NA
MT0022R	12" Electric Brake Right	NA

## HAND WINCH



Part Number	Description	Bag Quantity
Hand Winch	900 LBS	NA
Hand Winch	1600 LBS	120/ Pallet
Hand Winch	2500 LBS	72/ Pallet

# TRAILER PARTS

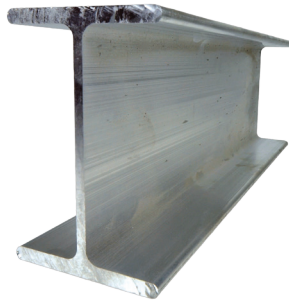
## CLAMPS



Part Number	Description	Bag Quantity
CL0007	2" 304SS Narrow Band Clamp	NA
CL0008	2.5" 304SS Narrow Band Clamp	NA
CL0009	3" 304SS Narrow Band Clamp	NA
CL0010	5" 304SS Narrow Band Clamp	NA
CL0021	#6 Hose Clamp SS 302 (HC3006)	NA
CL0022	#8 Hose Clamp SS 302 (HC3008)	NA
CL0023	#10 Hose Clamp SS 302 (HC3010)	NA
CL0025	#16 Hose Clamp SS 302 (HC3016)	NA
CL0026	#20 Hose Clamp SS 302 (HC3020)	NA
CL0027	#24 Hose Clamp SS 302 (HC3024)	NA
CL0028	#28 Hose Clamp SS 302 (HC3028)	NA
CL0029	#32 Hose Clamp SS 302 (HC3032)	NA
CL0030	#36 Hose Clamp SS 302 (HC3036)	NA
CL0031	#40 Hose Clamp SS 302 (HC3040)	NA
CL0032	#44 Hose Clamp SS 302 (HC3044)	NA
CL0033	#48 Hose Clamp SS 302 (HC3048)	NA
CL0034	#52 Hose Clamp SS 302 (HC3052)	NA
CL0035	#56 Hose Clamp SS 302 (HC3056)	NA
CL0036	#64 Hose Clamp SS 302 (HC3064)	NA
CL0037	#72 Hose Clamp SS 302 (HC3072)	NA
CL0039	#88 Hose Clamp SS 302 (HC3088)	NA
CL0040	#96 Hose Clamp SS 302 (HC3096)	NA
CL0041	#104 Hose Clamp SS 302 (HC3104)	NA
CL0042	#60 Hose Clamp SS 302 (HC3060)	NA

# TRAILER PARTS

## I-BEAM EXTRUSION



Part Number	Description	Bag Quantity
IB45	4.5" I-Beam Extrusion	NA
IB55	5.5" I-Beam Extrusion	NA
IB65	6.5" I-Beam Extrusion	NA
IB75	7.5" I-Beam Extrusion	NA

## WINCH & RATCHET STRAPS



Part Number	Description	Bag Quantity
LCW427FH	27' x 4" Winch Strap w/ Flat Hook	360/ Pallet
R5027FH	27' x 2" Ratchet Strap w/ Flat Hook	360/ Pallet
R5027WH	27' x 2" Ratchet Strap w/ Double J Hook	360/ Pallet